

Unraveling the Secrets of the OPIS Spot Ticker

Cory Wilchek

Principal Journalist

1980

Founded as an oil news service and launched rack pricing

1986

Launched spot pricing in North America

1996

Acquired rack pricing service from Computer Petroleum Corp.

1999

Launched first U.S. fuel retail pricing database



2005

Acquired Axxis Petroleum Software

2007

Expanded spot pricing to Europe



2008

Expanded spot pricing to Asia

2012

Acquired LCI Energy Insight natural gas service

2015

Acquired NAVX retail fuel prices in Europe



2017

IHS merged with Markit; OPIS added coal indices to pricing portfolio

2016

IHS acquired OPIS

Acquired PetroChem Wire and benchmark olefins and polyolefins prices

2018

2022

News Corp acquired OPIS and Chemical Market Analytics from IHS Markit; both joined the Dow Jones Professional Information Business

What are gasoline and distillate spot markets?

- Cash markets – in contrast to the futures or “paper” markets
- Typically large volume deals, with minimums ranging from 5k-25k barrels
- Incremental barrels, when suppliers have extra material or need material





OPIS Spot Ticker

Real-time U.S. Refined Products Pricing - 24/7

OPIS DEAL LOG

GULF COAST (24) MIDWEST (15)
NORTHEAST (6) WEST COAST (15)

NEWS

BP to Install Tesla Fast Chargers at its US Retail Network Starting in 2024

NYMEX GLOBEX LIVE TICKING - 10/26/23 16:21:08ET

ICE LIVE TICKING - 10/26/23 16:21:08ET

WTI (CL)			RBOB (RB)			ULSD (HO)			BRENT		
Price	Change		Price	Change		Price	Change		Price	Change	
DEC 2023 83.2100	-2.1800 ↓		NOV 2023 2.2561	-0.281 ↓		NOV 2023 3.0439	+0.134 ↑		DEC 2023 87.9300	-2.2000 ↓	
JAN 2024 82.5400	-2.1500 ↓		DEC 2023 2.2371	-0.317 ↓		DEC 2023 2.9656	+0.065 ↑		JAN 2024 87.0500	-2.0700 ↓	
WTI 3:2:1 22.5754	+1.5808 ↑		JAN 2024 2.2317	-0.329 ↓		JAN 2024 2.9170	-0.020 ↓		BRENT 3:2:1 17.8554	+1.6008 ↑	

EAST CBOB

	Cash Price	Cash Change	Basis Diff	Basis Change	Cycle Timing	Ref Month
NYHB*	2.2786	-0.281 ↓	+0.225	.0000	PMPT	NOV
GC*	2.0596	-0.487 ↓	-1.775	-0.170 ↓	C62	DEC
G3*	2.1161	-0.681 ↓	-1.400	-0.400 ↓	PMPT	NOV
Chi.Comp*	2.0671	+0.008 ↑	-1.700	+0.325 ↑	NOV1	DEC

EAST RBOB UNL

	Cash Price	Cash Change	Basis Diff	Basis Change	Cycle Timing	Ref Month
	2.2786	-0.281 ↓	+0.225	.0000	PMPT	NOV
	2.0821	-0.317 ↓	-1.550	.0000	C62	DEC
	---	---	---	---	---	---
	2.0871	+0.008 ↑	-1.500	+0.325 ↑	NOV1	DEC

EAST ULS#2

	Cash Price	Cash Change	Basis Diff	Basis Change	Cycle Timing	Ref Month
	3.0514	+0.059 ↑	+0.075	-0.075 ↓	PMPT	NOV
	2.8931	+0.090 ↑	-0.725	+0.025 ↑	C62	DEC
	3.0289	-0.266 ↓	-0.150	-0.400 ↓	PMPT	NOV
	2.7256	+0.065 ↑	-2.400	.0000	NOV1	DEC

WEST CARBOB

	Cash Price	Cash Change	Basis Diff	Basis Change	Cycle Timing	Ref Month
LA*	2.5171	+0.033 ↑	+2.800	+0.350 ↑	NOV	DEC
SF*	2.4171	-0.317 ↓	+1.800	.0000	NOV	DEC
PNW*	2.2821	-0.717 ↓	+0.450	-0.400 ↓	PMPT OCT	DEC
LA PPR	2.4571	-0.317 ↓	+2.200	.0000	NOV	DEC

WEST CARB#2

	Cash Price	Cash Change	Basis Diff	Basis Change	Cycle Timing	Ref Month
	3.0056	+0.065 ↑	+0.400	.0000	NOV	DEC
	2.8906	-0.135 ↓	-0.750	-0.200 ↓	NOV	DEC
	---	---	---	---	---	---
	3.0256	+0.065 ↑	+0.600	.0000	NOV	DEC

WEST ULS#2

	Cash Price	Cash Change	Basis Diff	Basis Change	Cycle Timing	Ref Month
	2.9656	-0.135 ↓	.0000	-0.200 ↓	NOV	DEC
	2.8906	-0.135 ↓	-0.750	-0.200 ↓	NOV	DEC
	2.9156	+0.065 ↑	-0.500	.0000	PMPT OCT	DEC
	---	---	---	---	---	---

RINS

JET

GULF COAST

	Cash Price	Cash Change	Basis Diff	Basis Change	Cycle Timing	Ref Month
CBOB Reg 13.5 RVP	2.0596	-0.487 ↓	-1.775	-0.170 ↓	C62	DEC
CBOB Pre 13.5 RVP	2.2671	-1.012 ↓	+0.300	-0.695 ↓	C62	DEC
Unl Reg 13.5 RVP	2.1621	-0.517 ↓	-0.750	-0.200 ↓	C62	DEC
Unl Pre 13.5 RVP	2.4521	-0.517 ↓	+2.150	-0.200 ↓	C62	DEC
RBOB Reg 13.5 RVP	2.0821	-0.317 ↓	-1.550	.0000	C62	DEC
RBOB Pre 13.5 RVP	2.3396	-0.492 ↓	+1.025	-0.175 ↓	C62	DEC
CPL Line 01	.0950	+0.163 ↑	---	---	C62	---
Ultra Low Sulfur No. 2	2.8931	+0.090 ↑	-0.725	+0.025 ↑	C62	DEC
61ULSD	2.8931	+0.090 ↑	-0.725	+0.025 ↑	C62	DEC
ULS HO	2.7851	+0.100 ↑	-1.805	+0.035 ↑	C62	DEC
High Sulfur No. 2	2.6511	+0.065 ↑	-3.145	.0000	C62	DEC

ETHANOL

GULF COAST WATERBORNE

	Cash Price	Cash Change	Basis Diff	Basis Change	Cycle Timing	Ref Month
Unl Reg 13.5 RVP	2.1746	-0.517 ↓	-0.625	-0.200 ↓	PMPT	DEC
Unl Pre 13.5 RVP	2.4646	-0.517 ↓	+2.275	-0.200 ↓	PMPT	DEC
Alkylate	2.6356	-0.317 ↓	+3.985	.0000	PMPT	DEC
Ultra Low Sulfur No. 2	2.9231	+0.090 ↑	-0.425	+0.025 ↑	PMPT	DEC
ULS HO	2.8151	+0.100 ↑	-1.505	+0.035 ↑	PMPT	DEC
Low Sulfur No. 2	2.6761	+0.065 ↑	-2.895	.0000	PMPT	DEC
Low Sulfur Off Road	2.6686	+0.065 ↑	-2.970	.0000	PMPT	DEC
High Sulfur No. 2	2.6636	+0.065 ↑	-3.020	.0000	PMPT	DEC
55 Grade Kero	2.9156	+0.358 ↑	-0.500	+0.293 ↑	PMPT	DEC
Jet 54	2.8306	+0.358 ↑	-1.350	+0.293 ↑	PMPT	DEC

LINDEN JUNCTION

What the Ticker Does

- Shows real-time price movement
 - Futures and Spot Prices
 - Both basis differentials and cash values
 - Helps predict rack moves
- Multiple markets
- Access to Reports and News



- Main screen starts ticking at 8 a.m. ET
 - NYMEX Globex ticks through the day (except between 5:45-6 p.m ET)
- NYMEX, Basis Differentials, Cash Prices move throughout the day
- NYMEX (main screen) stops moving at settlement (between 2:30-2:45 p.m. ET)
- Basis differentials tick every time an editor gets an update
 - Can move after NYMEX stops ticking, 24/7
 - Generally stops in early evening

Sections of the Ticker

Top Menu → HOME EDITORIAL NOTES DEAL LOG NEWS REPORTS CONTACT US

OPIS | OPIS Spot Ticker | Real-time U.S. Refined Products Pricing - 24/7

OPIS DEAL LOG | **NEWS** | BP to Install Tesla Fast Chargers at its US Retail Network Starting in 2024

NYMEX | **GLOBEX** | LIVE TICKING - 10/26/23 16:21:08ET

WTI (CL) | **RBOB (RB)** | **ULSD (HO)** | **BRENT**

	Price	Change		Price	Change		Price	Change		Price	Change
DEC 2023	83.2100	-2.1800 ↓	NOV 2023	2.2561	-0.0281 ↓	NOV 2023	3.0439	+0.0134 ↑	DEC 2023	87.9300	-2.2000 ↓
JAN 2024	82.5400	-2.1500 ↓	DEC 2023	2.2371	-0.0317 ↓	DEC 2023	2.9656	+0.0065 ↑	JAN 2024	87.0500	-2.0700 ↓
WTI 3:2:1	22.5754	+1.5808 ↑	JAN 2024	2.2317	-0.0329 ↓	JAN 2024	2.9170	-0.0020 ↓	BRENT 3:2:1	17.8554	+1.6008 ↑

Deal Log Counter →

NYMEX Futures →

Overview →

Details Section →

Directional Arrows →

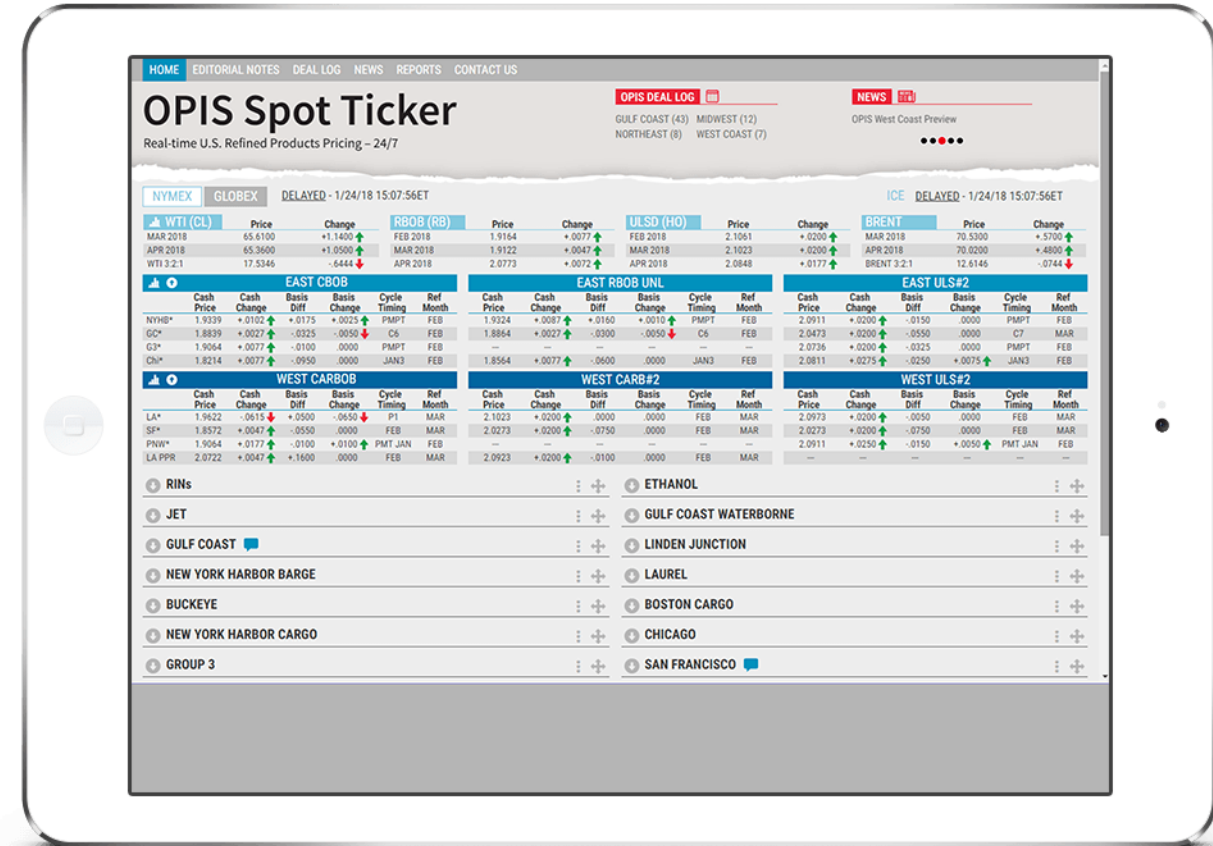
EAST CBOB							EAST RBOB UNL							EAST ULS#2						
	Cash Price	Cash Change	Basis Diff	Basis Change	Cycle Timing	Ref Month		Cash Price	Cash Change	Basis Diff	Basis Change	Cycle Timing	Ref Month		Cash Price	Cash Change	Basis Diff	Basis Change	Cycle Timing	Ref Month
NYHB*	2.2786	-0.0281 ↓	+0.0225	.0000	PMPT	NOV	2.2786	-0.0281 ↓	+0.0225	.0000	PMPT	NOV	3.0514	+0.0059 ↑	+0.0075	-0.0075 ↓	PMPT	NOV		
GC*	2.0596	-0.0487 ↓	-1.1775	-0.1770 ↓	C62	DEC	2.0821	-0.0317 ↓	-1.1550	.0000	C62	DEC	2.8931	+0.0090 ↑	-0.0725	+0.0025 ↑	C62	DEC		
G3*	2.1161	-0.0681 ↓	-1.1400	-0.0400 ↓	PMPT	NOV	---	---	---	---	---	---	3.0289	-0.0266 ↓	-0.0150	-0.0400 ↓	PMPT	NOV		
Chi.Comp*	2.0671	+0.0008 ↑	-1.1700	+0.0325 ↑	NOV1	DEC	2.0871	+0.0008 ↑	-1.1500	+0.0325 ↑	NOV1	DEC	2.7256	+0.0065 ↑	-2.4000	.0000	NOV1	DEC		

WEST CARBOB							WEST CARB#2							WEST ULS#2						
	Cash Price	Cash Change	Basis Diff	Basis Change	Cycle Timing	Ref Month		Cash Price	Cash Change	Basis Diff	Basis Change	Cycle Timing	Ref Month		Cash Price	Cash Change	Basis Diff	Basis Change	Cycle Timing	Ref Month
LA*	2.5171	+0.0033 ↑	+2.2800	+0.0350 ↑	NOV	DEC	3.0056	+0.0065 ↑	+0.0400	.0000	NOV	DEC	2.9656	-0.0135 ↓	.0000	-0.0200 ↓	NOV	DEC		
SF*	2.4171	-0.0317 ↓	+1.1800	.0000	NOV	DEC	2.8906	-0.0135 ↓	-0.0750	-0.0200 ↓	NOV	DEC	2.8906	-0.0135 ↓	-0.0750	-0.0200 ↓	NOV	DEC		
PNW*	2.2821	-0.0717 ↓	+0.0450	-0.0400 ↓	PMT	OCT	---	---	---	---	---	---	2.9156	+0.0065 ↑	-0.0500	.0000	PMT	OCT		
LA PPR	2.4571	-0.0317 ↓	+2.2200	.0000	NOV	DEC	3.0256	+0.0065 ↑	+0.0600	.0000	NOV	DEC	---	---	---	---	---	---		

GULF COAST							GULF COAST WATERBORNE						
	Cash Price	Cash Change	Basis Diff	Basis Change	Cycle Timing	Ref Month		Cash Price	Cash Change	Basis Diff	Basis Change	Cycle Timing	Ref Month
CBOB Reg 13.5 RVP	2.0596	-0.0487 ↓	-1.1775	-0.1770 ↓	C62	DEC	Unl Reg 13.5 RVP	2.1746	-0.0517 ↓	-0.0625	-0.0200 ↓	PMPT	DEC
CBOB Pre 13.5 RVP	2.2671	-1.1012 ↓	+0.0300	-0.0695 ↓	C62	DEC	Unl Pre 13.5 RVP	2.4646	-0.0517 ↓	+2.2775	-0.0200 ↓	PMPT	DEC
Unl Reg 13.5 RVP	2.1621	-0.0517 ↓	-0.0750	-0.0200 ↓	C62	DEC	Alkylate	2.6356	-0.0317 ↓	+3.985	.0000	PMPT	DEC
Unl Pre 13.5 RVP	2.4521	-0.0517 ↓	+2.1500	-0.0200 ↓	C62	DEC	Ultra Low Sulfur No. 2	2.9231	+0.0090 ↑	-0.0425	+0.0025 ↑	PMPT	DEC
RBOB Reg 13.5 RVP	2.0821	-0.0317 ↓	-1.1550	.0000	C62	DEC	ULS HO	2.8151	+0.0100 ↑	-1.1505	+0.0035 ↑	PMPT	DEC
RBOB Pre 13.5 RVP	2.3396	-0.0492 ↓	+1.1025	-0.0175 ↓	C62	DEC	Low Sulfur No. 2	2.6761	+0.0065 ↑	-2.895	.0000	PMPT	DEC
CPL Line 01	.0950	+0.0163 ↑	---	---	C62	---	Low Sulfur Off Road	2.6686	+0.0065 ↑	-2.970	.0000	PMPT	DEC
Ultra Low Sulfur No. 2	2.8931	+0.0090 ↑	-0.0725	+0.0025 ↑	C62	DEC	High Sulfur No. 2	2.6636	+0.0065 ↑	-3.020	.0000	PMPT	DEC
61ULSD	2.8931	+0.0090 ↑	-0.0725	+0.0025 ↑	C62	DEC	55 Grade Kero	2.9156	+0.0358 ↑	-0.0500	+0.0293 ↑	PMPT	DEC
ULS HO	2.7851	+0.0100 ↑	-1.1805	+0.0035 ↑	C62	DEC	Jet 54	2.8306	+0.0358 ↑	-1.1350	+0.0293 ↑	PMPT	DEC
High Sulfur No. 2	2.6511	+0.0065 ↑	-3.145	.0000	C62	DEC							

Price Calculation

- Cash Price = Basis Diff + NYMEX Ref Month Value
- Traders talk differentials to the NYMEX/Screen
- Rack and retail users often follow the Cash Price
- How Ticker subscribers can use cash change
 - Dispatch or hold trucks



- For Gulf Coast CBOB Spot Price

- NYMEX RBOB Price = \$2.90/gal

- Basis Differential = -20cts/gal

- What is the Cash Price?

- \$2.7000/gal

How Jobbers Can Use the Ticker

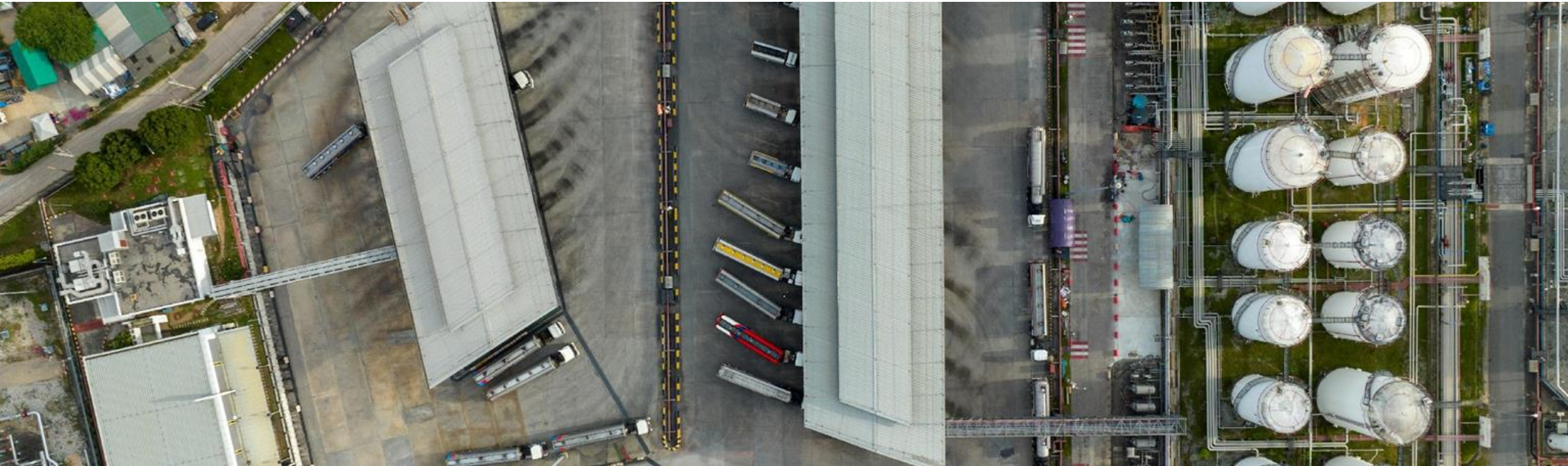
● For Chicago CBOB

- CBOB Cash Change shows +.0800

● Would a jobber hold back or send out their trucks?

- Send out trucks ahead of 6 p.m. Rack Price change

Jobber: a petroleum marketer, responsible for purchasing fuel from refiners at the rack and transporting material to gas stations and the retail sector



Parts of the Ticker

NYMEX vs. GLOBEX

Live vs. Delayed: NYMEX & ICE

NYMEX						ICE					
LIVE TICKING - 9/18/23 10:59:37ET						LIVE TICKING - 9/18/23 10:59:37ET					
WTI (CL)	Price	Change	RBOB (RB)	Price	Change	ULSD (HO)	Price	Change	BRENT	Price	Change
OCT 2023	91.8700	+1.1000 ↑	OCT 2023	2.7079	-0.002 ↓	OCT 2023	3.3501	-0.0333 ↓	NOV 2023	94.6500	+0.7200 ↑
NOV 2023	90.9900	+0.9700 ↑	NOV 2023	2.6498	+0.0009 ↑	NOV 2023	3.2791	-0.0292 ↓	DEC 2023	93.6000	+0.5600 ↑
WTI 3:2:1	30.8526	-1.5718 ↓	DEC 2023	2.5708	+0.0061 ↑	DEC 2023	3.1454	-0.0256 ↓	BRENT 3:2:1	28.0726	-1.1918 ↓

EAST CBOB						EAST RBOB UNL						EAST ULS#2					
Cash	Cash	Basis	Basis	Cycle	Ref	Cash	Cash	Basis	Basis	Cycle	Ref	Cash	Cash	Basis	Basis	Cycle	Ref

Crude Futures Prices

- WTI = U.S., Domestic
- Brent = European, International
- 3:2:1 – measure of refiner profits
- Always in Dollar/Barrel (\$/bbl)

Refined Product Futures Prices

- RBOB = Gasoline
- ULSD (HO) = Distillates and Diesels
- In Dollars/Gallon (\$/gal) on the Ticker
- In Cents/Gallon (cts/gal) on published reports

Globex Toggle

HOME EDITORIAL NOTES DEAL LOG NEWS REPORTS CONTACT US Saving user layout... Hi, Cory

OPIS | **OPIS Spot Ticker**
Real-time U.S. Refined Products Pricing - 24/7

OPIS DEAL LOG **NEWS**

GULF COAST (3) MIDWEST (0)
NORTHEAST (0) WEST COAST (0)

OPIS Asia Marine Fuels 18 September 2023

NYMEX **GLOBEX** LIVE TICKING - 9/18/23 11:00:28ET

ICE LIVE TICKING - 9/18/23 11:00:28ET

WTI (CL)	Price	Change	RBOB (RB)	Price	Change	ULSD (HO)	Price	Change	BRENT	Price	Change
OCT 2023	91.8800	+1.1100 ↑	OCT 2023	2.7074	-0.0007 ↓	OCT 2023	3.3521	-0.0313 ↓	NOV 2023	94.6300	+0.7000 ↑
NOV 2023	90.9800	+0.9600 ↑	NOV 2023	2.6503	+0.0014 ↑	NOV 2023	3.2802	-0.0281 ↓	DEC 2023	93.5900	+0.5500 ↑
WTI 3:2:1	30.8566	-1.5678 ↓	DEC 2023	2.5718	+0.0071 ↑	DEC 2023	3.1466	-0.0244 ↓	BRENT 3:2:1	28.1066	-1.1578 ↓

EAST CBOB							EAST RBOB UNL						EAST ULS#2					
Cash Price	Cash Change	Basis Diff	Basis Change	Cycle Timing	Ref Month		Cash Price	Cash Change	Basis Diff	Basis Change	Cycle Timing	Ref Month	Cash Price	Cash Change	Basis Diff	Basis Change	Cycle Timing	Ref Month
NYHR*	2 7184	-1872 ↓	+0110	-1865 ↓	PMPT	OCT	2 7184	-1972 ↓	+0110	-1965 ↓	PMPT	OCT	3 3621	-0263 ↓	+0100	+0050 ↑	PMPT	OCT

Main Screen – Attack on Saudi Infrastructure (Sun. Night)

NYMEX GLOBEX LIVE TICKING - 9/15/19 23:49:37ET						ICE LIVE TICKING - 9/15/19 23:49:37ET														
WTI (CL)			RBOB (RB)			ULSD (HO)			BRENT											
	Price	Change		Price	Change		Price	Change		Price	Change									
OCT 2019	54.8500	-0.2400 ↓	OCT 2019	1.5531	+0.001 ↑	OCT 2019	1.8778	-0.0073 ↓	NOV 2019	60.2200	-0.1600 ↓									
NOV 2019	54.8000	-0.2500 ↓	NOV 2019	1.5354	+0.0004 ↑	NOV 2019	1.8769	-0.0078 ↓	DEC 2019	59.2500	-0.2100 ↓									
WTI 3:2:1	14.9260	+0.1406 ↑	DEC 2019	1.5142	-0.0010 ↓	DEC 2019	1.8747	-0.0082 ↓	BRENT 3:2:1	9.5560	+0.0606 ↑									
EAST CBOB						EAST RBOB UNL						EAST ULS#2								
	Cash Price	Cash Change	Basis Diff	Basis Change	Cycle Timing	Ref Month		Cash Price	Cash Change	Basis Diff	Basis Change	Cycle Timing	Ref Month		Cash Price	Cash Change	Basis Diff	Basis Change	Cycle Timing	Ref Month
NYHB*	1.6306	.0000	+0.0775	.0000	PMPT	OCT	1.6431	.0000	+0.0900	.0000	.0000	PMPT	OCT	1.8778	.0000	.0000	.0000	.0000	PMPT	OCT
GC*	1.5681	-0.0025 ↓	+0.0150	-0.0025 ↓	C54	OCT	1.5556	.0000	+0.0025	.0000	.0000	C54	OCT	1.8398	+0.0020 ↑	-0.0380	+0.0020 ↑	.0000	C54	OCT
G3*	1.6456	.0000	+0.0925	.0000	PMPT	OCT	---	---	---	---	---	---	---	1.8678	.0000	-0.0100	.0000	.0000	PMPT	OCT
Chi*	1.5531	-0.0163 ↓	.0000	-0.0163 ↓	SEP3	OCT	1.5856	-0.0038 ↓	+0.0325	-0.0038 ↓	.0000	SEP3	OCT	1.7578	+0.0675 ↑	-0.1200	+0.0675 ↑	.0000	SEP3	OCT
WEST CARBOB						WEST CARB#2						WEST ULS#2								
	Cash Price	Cash Change	Basis Diff	Basis Change	Cycle Timing	Ref Month		Cash Price	Cash Change	Basis Diff	Basis Change	Cycle Timing	Ref Month		Cash Price	Cash Change	Basis Diff	Basis Change	Cycle Timing	Ref Month
LA*	2.0031	.0000	+0.4500	.0000	SEP	OCT	1.9378	.0000	+0.0600	.0000	.0000	SEP	OCT	1.9378	.0000	+0.0600	.0000	.0000	SEP	OCT
SF*	2.0131	.0000	+0.4600	.0000	SEP	OCT	1.9728	.0000	+0.0950	.0000	.0000	SEP	OCT	1.9728	.0000	+0.0950	.0000	.0000	SEP	OCT
PNW*	1.8331	.0000	+0.2800	.0000	PMT SEP	OCT	---	---	---	---	---	---	---	1.9378	.0000	+0.0600	.0000	.0000	PMT SEP	OCT
LA PPR	1.8654	.0000	+0.3300	.0000	OCT	NOV	1.9419	.0000	+0.0650	.0000	.0000	OCT	NOV	---	---	---	---	---	---	---
GULF COAST						GULF COAST WATERBORNE														
	Cash Price	Cash Change	Basis Diff	Basis Change	Cycle Timing	Ref Month		Cash Price	Cash Change	Basis Diff	Basis Change	Cycle Timing	Ref Month							
CBOB Reg 11.5 RVP	1.5681	-0.0025 ↓	+0.0150	-0.0025 ↓	C54	OCT	Unl Reg 11.5 RVP	1.6356	-0.0013 ↓	+0.0825	-0.0013 ↓	PMPT	OCT							
CBOB Pre 11.5 RVP	1.7431	-0.0025 ↓	+0.1900	-0.0025 ↓	C54	OCT	Unl Pre 11.5 RVP	1.8031	-0.0013 ↓	+0.2500	-0.0013 ↓	PMPT	OCT							
Unl Reg 11.5 RVP	1.6231	-0.0013 ↓	+0.0700	-0.0013 ↓	C54	OCT	Alkylate	1.9231	-0.0013 ↓	+0.3700	-0.0013 ↓	PMPT	OCT							
Unl Pre 11.5 RVP	1.7729	-0.0138 ↓	+0.2375	-0.0138 ↓	C55	NOV	Ultra Low Sulfur No. 2	1.8498	+0.0020 ↑	-0.0280	+0.0020 ↑	PMPT	OCT							
RBOB Reg 13.5 RVP	1.5556	.0000	+0.0025	.0000	C54	OCT	ULS HO	1.8273	+0.0020 ↑	-0.0505	+0.0020 ↑	PMPT	OCT							
RBOB Pre 13.5 RVP	1.7406	.0000	+0.1875	.0000	C54	OCT	Low Sulfur No. 2	1.7478	.0000	-0.1300	.0000	PMPT	OCT							
CPL Line 01	-0.0225	.0000	---	---	C54	---	Low Sulfur Off Road	1.7403	.0000	-0.1375	.0000	PMPT	OCT							
Ultra Low Sulfur No. 2	1.8398	+0.0020 ↑	-0.0380	+0.0020 ↑	C54	OCT	High Sulfur No. 2	1.7353	.0000	-0.1425	.0000	PMPT	OCT							
61ULSD	1.8398	+0.0020 ↑	-0.0380	+0.0020 ↑	C54	OCT	55 Grade Kero	1.8628	+0.0013 ↑	-0.0150	+0.0013 ↑	PMPT	OCT							
ULS HO	1.8173	+0.0020 ↑	-0.0605	+0.0020 ↑	C54	OCT	Jet 54	1.8128	+0.0013 ↑	-0.0650	+0.0013 ↑	PMPT	OCT							
High Sulfur No. 2	1.7228	.0000	-0.1550	.0000	C53	OCT														
55 Grade Kero	1.8478	+0.0013 ↑	-0.0300	+0.0013 ↑	C54	OCT														
ULS Kero	1.9678	+0.0013 ↑	+0.0900	+0.0013 ↑	C54	OCT														
Jet 54	1.7978	+0.0013 ↑	-0.0800	+0.0013 ↑	C54	OCT														
CPL Line 02	-0.0075	.0000	---	---	C54	---														
ETHANOL						LINDEN JUNCTION														

Globex Screen – Attack on Saudi Infrastructure (Sun. Night)

NYMEX						GLOBEX						ICE												
LIVE TICKING - 9/15/19 23:50:35ET												LIVE TICKING - 9/15/19 23:50:35ET												
WTI (CL)			Price	Change		ROBOB (RB)			Price	Change		ULSD (HO)			Price	Change		BRENT			Price	Change		
OCT 2019	59.6900	+4.8400	↑		OCT 2019	1.6862	+1.1331	↑		OCT 2019	2.0147	+1.1369	↑		NOV 2019	66.1600	+5.9400	↑		NOV 2019	64.8400	+5.5900	↑	
NOV 2019	59.5300	+4.7300	↑		NOV 2019	1.6612	+1.1258	↑		NOV 2019	2.0126	+1.1357	↑		DEC 2019	64.8400	+5.5900	↑		DEC 2019	64.8400	+5.5900	↑	
WTI 3:2:1	15.7294	+1.8034	↑		DEC 2019	1.6354	+1.1212	↑		DEC 2019	2.0081	+1.1334	↑		BRENT 3:2:1	9.2594	-2.966	↓						
EAST CBOB						EAST ROBOB UNL						EAST ULS#2												
	Cash Price	Cash Change	Basis Diff	Basis Change	Cycle Timing	Ref Month		Cash Price	Cash Change	Basis Diff	Basis Change	Cycle Timing	Ref Month		Cash Price	Cash Change	Basis Diff	Basis Change	Cycle Timing	Ref Month				
NYHB*	1.7637	+1.1331	↑	+0.0775	.0000	PMPT	OCT	1.7762	+1.1331	↑	+0.0900	.0000	PMPT	OCT	2.0147	+1.1369	↑	.0000	.0000	PMPT	OCT			
GC*	1.7012	+1.1306	↑	+0.0150	-0.0025	↓	C54	OCT	1.6887	+1.1331	↑	+0.0025	.0000	C54	OCT	1.9767	+1.1389	↑	-0.0380	+0.0020	↑	C54	OCT	
G3*	1.7787	+1.1331	↑	+0.0925	.0000	PMPT	OCT								2.0047	+1.1369	↑	-0.1000	.0000	PMPT	OCT			
Chi*	1.6862	+1.1169	↑	.0000	-0.0163	↓	SEP3	OCT	1.7187	+1.1294	↑	+0.0325	-0.0038	↓	SEP3	OCT	1.8947	+2.044	↑	-1.200	+0.0675	↑	SEP3	OCT
WEST CARBOB						WEST CARB#2						WEST ULS#2												
	Cash Price	Cash Change	Basis Diff	Basis Change	Cycle Timing	Ref Month		Cash Price	Cash Change	Basis Diff	Basis Change	Cycle Timing	Ref Month		Cash Price	Cash Change	Basis Diff	Basis Change	Cycle Timing	Ref Month				
LA*	2.1362	+1.1331	↑	+4.4500	.0000	SEP	OCT	2.0747	+1.1369	↑	+0.0600	.0000	SEP	OCT	2.0747	+1.1369	↑	+0.0600	.0000	SEP	OCT			
SF*	2.1462	+1.1331	↑	+4.4600	.0000	SEP	OCT	2.1097	+1.1369	↑	+0.0950	.0000	SEP	OCT	2.1097	+1.1369	↑	+0.0950	.0000	SEP	OCT			
PNW*	1.9662	+1.1331	↑	+2.800	.0000	PMT	SEP	OCT							2.0747	+1.1369	↑	+0.0600	.0000	PMT	SEP	OCT		
LA PPR	1.9912	+1.1258	↑	+3.300	.0000	OCT	NOV	2.0776	+1.1357	↑	+0.0650	.0000	OCT	NOV										
GULF COAST						GULF COAST WATERBORNE																		
	Cash Price	Cash Change	Basis Diff	Basis Change	Cycle Timing	Ref Month		Cash Price	Cash Change	Basis Diff	Basis Change	Cycle Timing	Ref Month											
CBOB Reg 11.5 RVP	1.7012	+1.1306	↑	+0.0150	-0.0025	↓	C54	OCT	Unl Reg 11.5 RVP	1.7687	+1.1319	↑	+0.0825	-0.0013	↓	PMPT	OCT							
CBOB Pre 11.5 RVP	1.8762	+1.1306	↑	+1.1900	-0.0025	↓	C54	OCT	Unl Pre 11.5 RVP	1.9362	+1.1319	↑	+2.500	-0.0013	↓	PMPT	OCT							
Unl Reg 11.5 RVP	1.7562	+1.1319	↑	+0.0700	-0.0013	↓	C54	OCT	Alkylate	2.0562	+1.1319	↑	+3.700	-0.0013	↓	PMPT	OCT							
Unl Pre 11.5 RVP	1.8987	+1.1121	↑	+2.375	-0.138	↓	C55	NOV	Ultra Low Sulfur No. 2	1.9867	+1.1389	↑	-0.280	+0.0020	↑	PMPT	OCT							
RBOB Reg 13.5 RVP	1.6887	+1.1331	↑	+0.0025	.0000	C54	OCT	ULS HO	1.9642	+1.1389	↑	-0.0505	+0.0020	↑	PMPT	OCT								
RBOB Pre 13.5 RVP	1.8737	+1.1331	↑	+1.875	.0000	C54	OCT	Low Sulfur No. 2	1.8847	+1.1369	↑	-1.300	.0000	PMPT	OCT									
CPL Line 01	-0.0225	.0000				C54		Low Sulfur Off Road	1.8772	+1.1369	↑	-1.375	.0000	PMPT	OCT									
Ultra Low Sulfur No. 2	1.9767	+1.1389	↑	-0.380	+0.0020	↑	C54	OCT	High Sulfur No. 2	1.8722	+1.1369	↑	-1.425	.0000	PMPT	OCT								
61ULSD	1.9767	+1.1389	↑	-0.380	+0.0020	↑	C54	OCT	55 Grade Kero	1.9997	+1.1382	↑	-0.150	+0.0013	↑	PMPT	OCT							
ULS HO	1.9542	+1.1389	↑	-0.605	+0.0020	↑	C54	OCT	Jet 54	1.9497	+1.1382	↑	-0.650	+0.0013	↑	PMPT	OCT							
High Sulfur No. 2	1.8597	+1.1369	↑	-1.550	.0000	C53	OCT																	
55 Grade Kero	1.9847	+1.1382	↑	-0.300	+0.0013	↑	C54	OCT																
ULS Kero	2.1047	+1.1382	↑	+0.0900	+0.0013	↑	C54	OCT																
Jet 54	1.9347	+1.1382	↑	-0.800	+0.0013	↑	C54	OCT																
CPL Line 02	-0.0075	.0000				C54																		

Early March 2022 – Second Weekend of Ukrainian Invasion

GULF COAST

	Cash Price	Cash Change	Basis Diff	Basis Change	Cycle Timing	Ref Month
CBOB Reg 11.5 RVP	3.3665	+0.013 ↑	-1.775	+0.013 ↑	C15	APR
CBOB Pre 11.5 RVP	3.5315	+0.013 ↑	-.0125	+0.013 ↑	C15	APR
Unl Reg 11.5 RVP	3.4415	.0000	-.1025	.0000	C15	APR
Unl Pre 9.0 RVP	3.7150	+1.185 ↑	+1.1710	+1.185 ↑	C16	APR
RBOB Reg 11.5 RVP	3.3840	+0.013 ↑	-.1600	+0.013 ↑	C15	APR
RBOB Pre 11.5 RVP	3.5865	+0.013 ↑	+0.0425	+0.013 ↑	C15	APR
CPL Line 01	-.0050	.0000	---	---	C15	---
Ultra Low Sulfur No. 2	3.8038	-.0325 ↓	+0.0275	-.0325 ↓	C15	APR
61ULSD	3.8038	-.0325 ↓	+0.0275	-.0325 ↓	C15	APR
ULS HO	3.6553	-.0325 ↓	-.1210	-.0325 ↓	C15	APR
High Sulfur No. 2	3.6678	.0000	-.1085	.0000	C15	APR
55 Grade Kero	3.6163	-.0063 ↓	-.1600	-.0063 ↓	C15	APR
ULS Kero	3.6663	-.0063 ↓	-.1100	-.0063 ↓	C15	APR
Jet 54	3.5313	-.0063 ↓	-.2450	-.0063 ↓	C15	APR
CPL Line 02	-.0025	.0000	---	---	C15	---

GULF COAST

	Cash Price	Cash Change	Basis Diff	Basis Change	Cycle Timing	Ref Month
CBOB Reg 11.5 RVP	3.5697	+2.045 ↑	-1.775	+0.013 ↑	C15	APR
CBOB Pre 11.5 RVP	3.7347	+2.045 ↑	-.0125	+0.013 ↑	C15	APR
Unl Reg 11.5 RVP	3.6447	+2.032 ↑	-.1025	.0000	C15	APR
Unl Pre 9.0 RVP	3.9182	+3.217 ↑	+1.1710	+1.185 ↑	C16	APR
RBOB Reg 11.5 RVP	3.5872	+2.045 ↑	-.1600	+0.013 ↑	C15	APR
RBOB Pre 11.5 RVP	3.7897	+2.045 ↑	+0.0425	+0.013 ↑	C15	APR
CPL Line 01	-.0050	.0000	---	---	C15	---
Ultra Low Sulfur No. 2	4.0487	+2.124 ↑	+0.0275	-.0325 ↓	C15	APR
61ULSD	4.0487	+2.124 ↑	+0.0275	-.0325 ↓	C15	APR
ULS HO	3.9002	+2.124 ↑	-.1210	-.0325 ↓	C15	APR
High Sulfur No. 2	3.9127	+2.449 ↑	-.1085	.0000	C15	APR
55 Grade Kero	3.8612	+2.387 ↑	-.1600	-.0063 ↓	C15	APR
ULS Kero	3.9112	+2.387 ↑	-.1100	-.0063 ↓	C15	APR
Jet 54	3.7762	+2.387 ↑	-.2450	-.0063 ↓	C15	APR
CPL Line 02	-.0025	.0000	---	---	C15	---

East Coast Markets

“Marquee” Products

- CBOB + Sub-Octane
- RBOB
- ULS#2

- CARBOB
- CARB#2
- ULS#2

EAST CBOB							EAST RBOB UNL						EAST ULS#2					
	Cash Price	Cash Change	Basis Diff	Basis Change	Cycle Timing	Ref Month	Cash Price	Cash Change	Basis Diff	Basis Change	Cycle Timing	Ref Month	Cash Price	Cash Change	Basis Diff	Basis Change	Cycle Timing	Ref Month
NYHB*	2.7170	-0.1886	+0.0110	-0.1865	PMPT	OCT	2.7170	-0.1986	+0.0110	-0.1965	PMPT	OCT	3.3566	-0.0318	+0.0100	+0.0050	PMPT	OCT
GC*	2.6085	-0.0121	-0.0975	-0.0100	C54	OCT	2.5960	-0.0021	-0.1100	.0000	C54	OCT	3.2606	-0.0448	-0.0860	-0.0080	C54	OCT
G3*	2.8310	-0.0196	+0.1250	-0.0175	PMPT	OCT	---	---	---	---	---	---	3.3141	-0.0368	-0.0325	.0000	PMPT	OCT
Chi.Comp*	2.5885	-0.0046	-0.1175	-0.0025	SEP3	OCT	2.6485	-0.0046	-0.0575	-0.0025	SEP3	OCT	2.9191	-0.0368	-0.4275	.0000	SEP3	OCT

WEST CARBOB							WEST CARB#2						WEST ULS#2					
	Cash Price	Cash Change	Basis Diff	Basis Change	Cycle Timing	Ref Month	Cash Price	Cash Change	Basis Diff	Basis Change	Cycle Timing	Ref Month	Cash Price	Cash Change	Basis Diff	Basis Change	Cycle Timing	Ref Month
LA*	4.2060	-0.0021	+1.5000	.0000	SEP	OCT	3.9266	-0.0368	+0.5800	.0000	SEP	OCT	3.9016	-0.0368	+0.5550	.0000	SEP	OCT
SF*	3.7110	-0.0021	+1.0050	.0000	SEP	OCT	4.0266	-0.0368	+0.6800	.0000	SEP	OCT	4.0266	-0.0368	+0.6800	.0000	SEP	OCT
PNW*	3.1160	+0.0029	+0.4100	+0.0050	PMT SEP	OCT	---	---	---	---	---	---	3.5966	-0.0368	+0.2500	.0000	PMT SEP	OCT
LA PPR	3.6477	-0.0012	+1.0000	.0000	OCT	NOV	3.6254	-0.0329	+0.3500	.0000	OCT	NOV	---	---	---	---	---	---

What are all these numbers?

The screenshot shows a table titled "EAST CBOB" with the following columns: Cash Price, Cash Change, Basis Diff, Basis Change, Cycle Timing, and Ref Month. Red arrows point from text labels to specific columns: "Cash Price" points to the Cash Price column, "Cash Change" points to the Cash Change column, "Basis Diff" points to the Basis Diff column, "Basis Change" points to the Basis Change column, "Reference Month" points to the Ref Month column, and "Cycle Timing" points to the Cycle Timing column.

	Cash Price	Cash Change	Basis Diff	Basis Change	Cycle Timing	Ref Month
NYHB*	2.7194	-0.1862 ↓	-0.0110 ↓	-0.1865 ↓	PMPT	OCT
GC*	2.6109	-0.0097 ↓	-0.0975 ↓	-0.0100 ↓	C54	OCT
G3*	2.8334	-0.0172 ↓	+0.1250 ↓	-0.0175 ↓	PMPT	OCT
Chi.Comp*	2.5909	-0.0022 ↓	-0.1175 ↓	-0.0025 ↓	SEP3	OCT

Collapsible Markets

EAST CBOB							EAST RBOB UNL						EAST ULS#2					
Cash Price	Cash Change	Basis Diff	Basis Change	Cycle Timing	Ref Month		Cash Price	Cash Change	Basis Diff	Basis Change	Cycle Timing	Ref Month	Cash Price	Cash Change	Basis Diff	Basis Change	Cycle Timing	Ref Month
NYHB*	2.7170	-.1886	+0.110	-.1865	PMPT	OCT	2.7170	-.1986	+0.110	-.1965	PMPT	OCT	3.3566	-.0318	+0.100	+0.0050	PMPT	OCT
GC*	2.6085	-.0121	-.0975	-.0100	C54	OCT	2.5960	-.0021	-.1100	.0000	C54	OCT	3.2606	-.0448	-.0860	-.0080	C54	OCT
G3*	2.8310	-.0196	+1.1250	-.0175	PMPT	OCT	---	---	---	---	---	---	3.3141	-.0368	-.0325	.0000	PMPT	OCT
Chi.Comp*	2.5885	-.0046	-.1175	-.0025	SEP3	OCT	2.6485	-.0046	-.0575	-.0025	SEP3	OCT	2.9191	-.0368	-.4275	.0000	SEP3	OCT

WEST CARBOB							WEST CARB#2						WEST ULS#2					
Cash Price	Cash Change	Basis Diff	Basis Change	Cycle Timing	Ref Month		Cash Price	Cash Change	Basis Diff	Basis Change	Cycle Timing	Ref Month	Cash Price	Cash Change	Basis Diff	Basis Change	Cycle Timing	Ref Month
LA*	4.2060	-.0021	+1.5000	.0000	SEP	OCT	3.9266	-.0368	+5.800	.0000	SEP	OCT	3.9016	-.0368	+5.550	.0000	SEP	OCT
SF*	3.7110	-.0021	+1.0050	.0000	SEP	OCT	4.0266	-.0368	+6.800	.0000	SEP	OCT	4.0266	-.0368	+6.800	.0000	SEP	OCT
PNW*	3.1160	+0.0029	+4.100	+0.0050	PMT SEP	OCT	---	---	---	---	---	---	3.5966	-.0368	+2.500	.0000	PMT SEP	OCT
LA PPR	3.6477	-.0012	+1.0000	.0000	OCT	NOV	3.6254	-.0329	+3.500	.0000	OCT	NOV	---	---	---	---	---	---

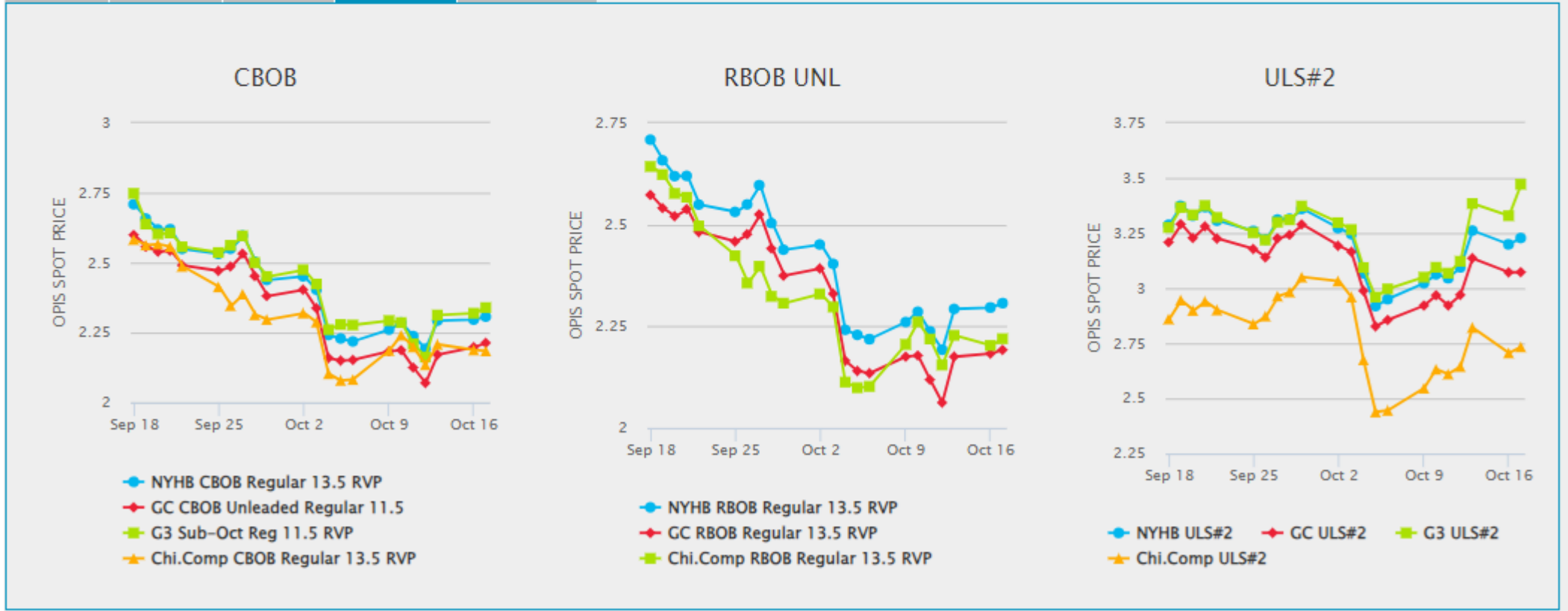
Graphs

Additional Features: Graphs

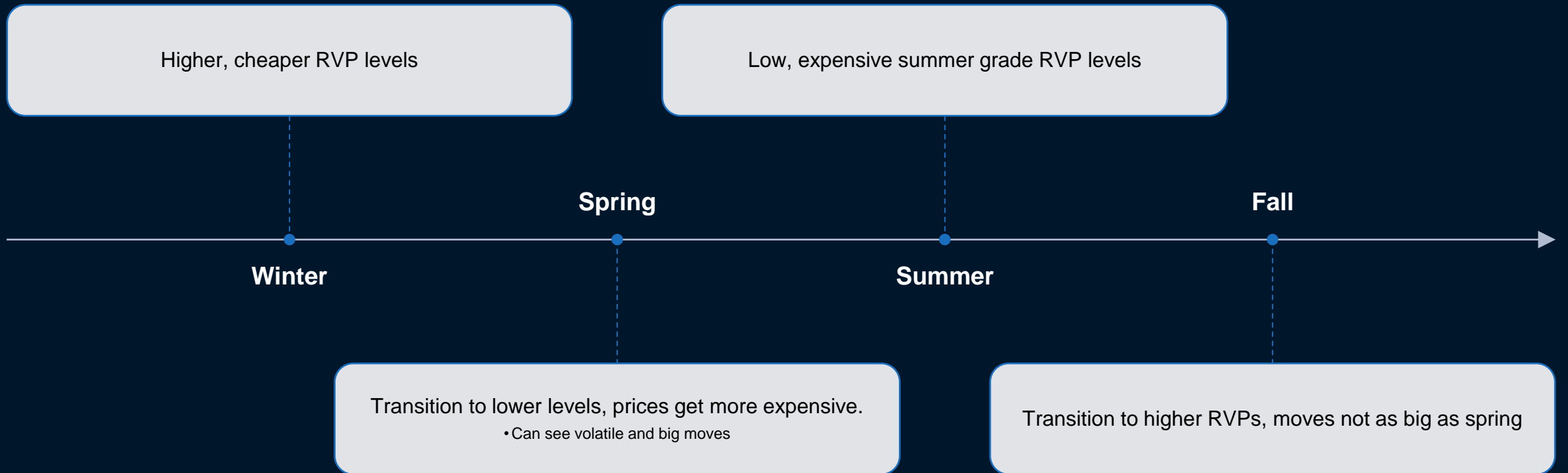
EAST CBOB							EAST RBOB UNL						EAST ULS#2					
	Cash Price	Cash Change	Basis Diff	Basis Change	Cycle Timing	Ref Month	Cash Price	Cash Change	Basis Diff	Basis Change	Cycle Timing	Ref Month	Cash Price	Cash Change	Basis Diff	Basis Change	Cycle Timing	Ref Month
NYHB*	2.3773	+0.0703 ↑	+0.0225	.0000	PMPT	NOV	2.3773	+0.0703 ↑	+0.0225	.0000	PMPT	NOV	3.1912	-.0368 ↓	+0.0525	+0.0013 ↑	PMPT	NOV
GC*	2.2823	+0.0691 ↑	-0.0725	-.0013 ↓	C60	NOV	2.2623	+0.0703 ↑	-0.0925	.0000	C60	NOV	3.0362	-.0368 ↓	-1.025	+0.0013 ↑	C60	NOV
G3*	2.4948	+1.1553 ↑	+1.1400	+0.0850 ↑	PMPT	NOV	---	---	---	---	---	---	3.8887	+0.4170 ↑	+7.7500	+4.4550 ↑	PMPT	NOV
Chi.Comp*	2.2498	+0.0653 ↑	-1.1050	-.0050 ↓	OCT3	NOV	2.2848	+0.0653 ↑	-0.0700	-.0050 ↓	OCT3	NOV	2.7237	-.0105 ↓	-4.150	+0.0275 ↑	OCT3	NOV

Graphs

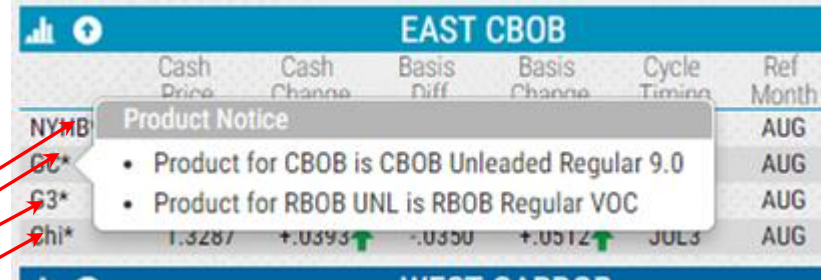
- Choices:
 -5-Day Diff
 -30-Day Diff
 -5-Day Cash
 -30-day Cash
 -Last 24 hours



RVP Changes – Seasonal Dynamics



What is one way to tell what RVP is showing on the Overview Section?



	Cash Price	Cash Change	Basis Diff	Basis Change	Cycle Timing	Ref Month
NYMB						AUG
GC*						AUG
G3*						AUG
Ghi*	1.3287	+0.0393 ↑	-0.0350	+0.0512 ↑	JUL3	AUG

Product Notice

- Product for CBOB is CBOB Unleaded Regular 9.0
- Product for RBOB UNL is RBOB Regular VOC

RVP
Hover

- Allows you to see which RVP is showing in the overview
- Only for Gasoline products
- Changes with the seasons

- Directly below Overview
- Secondary Markets – ex: Buckeye, Laurel
- More products, RVP labels – expands on overview section
- Ethanol and RINs now located here
- Editorial Notes – hover function and links
- Same columns as Overview section

Spot Markets – Details Section

Editorial Note
Hover

Multiple
RVPs

Additional
Products

GULF COAST							GULF COAST WATERBORNE						
	Cash Price	Cash Change	Basis Diff	Basis Change	Cycle Timing	Ref Month		Cash Price	Cash Change	Basis Diff	Basis Change	Cycle Timing	Ref Month
CBOB Reg 11.5 RVP*	2.6099	-0.0107 ↓	-0.0975	-0.0100 ↓	C54	OCT	Unl Reg 11.5 RVP	2.8874	-0.0007 ↓	+0.1800	.0000	PMPT	OCT
CBOB Reg 13.5 RVP	2.5624	-0.0107 ↓	-1.1450	-0.0100 ↓	C54	OCT	Unl Pre 11.5 RVP	3.2436	+0.0032 ↑	+0.5915	.0000	PMPT	NOV
CBOB Pre 11.5 RVP	2.9699	-0.0307 ↓	+0.2625	-0.0300 ↓	C54	OCT	Alkylate	3.3624	-0.0007 ↓	+0.6550	.0000	PMPT	OCT
Unl Reg 11.5 RVP	2.8749	-0.0007 ↓	+0.1675	.0000	C54	OCT	Ultra Low Sulfur No. 2	3.2217	-0.1137 ↓	-0.0560	-0.0080 ↓	PMPT	NOV
Unl Pre 11.5 RVP	3.2311	+0.0032 ↑	+0.5790	.0000	C55	NOV	ULS HO	3.0677	-0.1137 ↓	-0.2100	-0.0080 ↓	PMPT	NOV
RBOB Reg 13.5 RVP	2.5974	-0.0007 ↓	-0.1100	.0000	C54	OCT	Low Sulfur No. 2	2.8112	-0.1057 ↓	-0.4665	.0000	PMPT	NOV
RBOB Pre 13.5 RVP	3.0074	-0.0007 ↓	+0.3000	.0000	C54	OCT	Low Sulfur Off Road	2.8037	-0.1057 ↓	-0.4740	.0000	PMPT	NOV
CPL Line 01	.0400	+0.0100 ↑	---	---	C54	---	High Sulfur No. 2	2.8712	-0.0332 ↓	-0.4790	.0000	PMPT	OCT
Ultra Low Sulfur No. 2	3.2642	-0.0412 ↓	-0.0860	-0.0080 ↓	C54	OCT	55 Grade Kero	3.1077	-0.1082 ↓	-0.1700	-0.0025 ↓	PMPT	NOV
61ULSD	3.2642	-0.0412 ↓	-0.0860	-0.0080 ↓	C54	OCT	Jet 54	3.0227	-0.1082 ↓	-0.2550	-0.0025 ↓	PMPT	NOV
ULS HO	3.1102	-0.0412 ↓	-0.2400	-0.0080 ↓	C54	OCT							
High Sulfur No. 2	2.8587	-0.0332 ↓	-0.4915	.0000	C54	OCT							
55 Grade Kero	3.1652	-0.0357 ↓	-0.1850	-0.0025 ↓	C54	OCT							
ULS Kero	3.2152	-0.0357 ↓	-0.1350	-0.0025 ↓	C54	OCT							
Jet 54	3.0802	-0.0357 ↓	-0.2700	-0.0025 ↓	C54	OCT							
CPL Line 02	-0.0075	.0000	---	---	C54	---							

LINDEN JUNCTION						
	Cash Price	Cash Change	Basis Diff	Basis Change	Cycle Timing	Ref Month
CBOB Reg 11.5 RVP	2.7491	+0.0035 ↑	+0.0400	+0.0025 ↑	C51	OCT
CBOB Reg 13.5 RVP*	2.7491	+0.0010 ↑	+0.0400	.0000	C51	OCT
Unl Reg 9.0 RVP	3.0341	+0.0010 ↑	+0.3250	.0000	C50	OCT
Unl Pre 11.5 RVP	3.3841	+0.0010 ↑	+0.6750	.0000	C51	OCT
RBOB Reg 11.5 RVP	2.8091	+0.0010 ↑	+0.1000	.0000	C50	OCT
Ultra Low Sulfur No. 2	3.3549	-0.0335 ↓	+0.0050	.0000	C50	OCT
63ULSD	3.3549	-0.0335 ↓	+0.0050	.0000	C50	OCT
ULS HO	3.1999	-0.0335 ↓	-0.1500	.0000	C50	OCT
High Sulfur No. 2	3.1444	-0.0335 ↓	-0.2055	.0000	C50	OCT
Jet 54	3.2699	-0.0335 ↓	-0.0800	.0000	C51	OCT

Secondary
Markets

Individually
Collapsible &
Arrangeable

	Cash Price	Cash Change	Basis Diff	Basis Change	Cycle Timing			
CBOB Reg 11.5 RVP*	2.6115	-0.0091 ↓	-0.0975	-0.0100 ↓	C54			
CBOB Reg 13.5 RVP	2.5640	-0.0091 ↓	-0.1450	-0.0100 ↓	C54			
CBOB Pre 11.5 RVP	2.9715	-0.0291 ↓	+0.2625	-0.0300 ↓	C54			
Unl Reg 11.5 RVP	2.8765	+0.0009 ↑	+0.1675	.0000	C54			
Unl Pre 11.5 RVP	3.2325	+0.0046 ↑	+0.5790	.0000	C55	NOV	ULS HO	

Market Menu

Reset View:

Collapses all markets, moves markets back to default order

Default Ordering:

Keeps all markets open, moves markets to default order

Expand All:

Opens All Markets, keeps user order

Collapse All:

Collapses all markets, keeps user's order

Spot Markets – Details Section

Nationwide View of Jet Fuel Prices:
able to see full picture of market relationships

JET						
	Cash Price	Cash Change	Basis Diff	Basis Change	Cycle Timing	Ref Month
Gulf Coast	2.8542	-0.1050 ↓	-0.2950	-0.0425 ↓	C60	NOV
Gulf Coast Waterborne	2.8692	-0.1050 ↓	-0.2800	-0.0425 ↓	PMPT	NOV
Group 3	3.2392	-0.0625 ↓	+0.0900	.0000	PMPT	NOV
Chicago Comprehensive	3.0792	-0.0625 ↓	-0.0700	.0000	OCT3	NOV
Buckeye Complex	3.0792	-0.0625 ↓	-0.0700	.0000	OCT3	NOV
West Shore/ Badger Pipeline	3.0792	-0.0625 ↓	-0.0700	.0000	OCT3	NOV
NY Harbor Barge	2.9942	-0.0825 ↓	-0.1550	-0.0200 ↓	PMPT	NOV
Linden Junction	2.9942	-0.0825 ↓	-0.1550	-0.0200 ↓	C56	NOV
Buckeye Pipeline	2.9942	-0.0825 ↓	-0.1550	-0.0200 ↓	PMPT	NOV
Laurel Pipeline	2.9942	-0.0825 ↓	-0.1550	-0.0200 ↓	PMPT	NOV
NY Harbor Cargo	2.9942	-0.0825 ↓	-0.1550	-0.0200 ↓	PMPT	NOV
Los Angeles	3.1692	-0.1875 ↓	+0.0200	-0.1250 ↓	OCT	NOV
LA Paper	3.0921	-0.0382 ↓	+0.0500	.0000	NOV	DEC
San Francisco	3.1692	-0.1875 ↓	+0.0200	-0.1250 ↓	OCT	NOV
Pacific Northwest	3.3392	-0.1875 ↓	+0.1900	-0.1250 ↓	PMT OCT	NOV

- RINS and Ethanol broken out in Details Section
- Shows three different RIN prices
- Shows Ethanol spot prices

RINs						ETHANOL					
	Price	Change	Vintage	MTD Avg	YTD Avg		Cash Price	Cash Change	Price Type	Price Date	
Grain Ethanol D6	1.2600	-0.0125 ↓	2023	1.3173	1.3770	Chi	2.4600	-0.0450 ↓	CLOSE	09/15	
Biodiesel D4	1.2650	-0.0100 ↓	2023	1.3218	1.3805	Chi	2.4900	-0.0150 ↓	MIDDAY	09/15	
Advanced Biofuel D5	1.2600	-0.0100 ↓	2023	1.3168	1.3755	GC	2.5300	-0.0450 ↓	CLOSE	09/15	
BUCKEYE						NYHB	2.4800	-0.0950 ↓	CLOSE	09/15	
NEW YORK HARBOR CARGO						LA CI 79.90	2.8200	-0.0250 ↓	CLOSE	09/15	
GROUP 3						SF CI 79.90	2.8200	-0.0250 ↓	CLOSE	09/15	
	Cash Price	Cash Change	Basis Diff	Basis Change	Cycle Timing	Ref Month	Oregon CI 69.89	2.7800	-0.0300 ↓	CLOSE	09/15
							Washington	2.7300	-0.0300 ↓	CLOSE	09/15
							Tampa	2.6550	-0.0300 ↓	CLOSE	09/15
							Dallas	2.5800	-0.0350 ↓	CLOSE	09/15
							Phoenix	2.6100	-0.0300 ↓	CLOSE	09/15



OPIS DEAL LOG 

NEWS 

Able to Access:

- Editorial Notes
- Deal Log
- News Stories
- Reports
- Contact Customer Service

Editorial Note Hover

Gulf Coast Editorial Notes

- As per OPIS methodology, specialty gasoline grades and all blendstocks are rolled to match the cycle timing for conventional gasoline.
- Scheduling Notice: Colonial Pipeline Cycle 39 High Sulfur No. 2 Diesel schedules on Tuesday, 7/19. Cycle 40 will become prompt-timing on Wednesday, 7/20.

PNW*	1.4957	-0.0565	↓							1.51
LA PPR	1.4702	-0.0109	↓							
GULF COAST										
CBOB Reg 7.8 RVP	1.34									
CBOB Reg 9.0 RVP*	1.3007	-0.0015	↓	-0.0750	+0.0100	↑	C41	AUG	Unl Pre 9.0 RVP	1.4482
CBOB Pre 7.8 RVP	1.4757	-0.0715	↓	+1.0000	-0.0600	↓	C41	AUG	Alkylate	1.5282
CBOB Pre 9.0 RVP*	1.4357	-0.0315	↓	+0.0600	-0.0200	↓	C41	AUG	Ultra Low Sulfur No. 2	1.3326
Unl Reg 9.0 RVP	1.3482	+0.0010	↑	-0.0275	+0.0125	↑	C41	AUG	ULS HO	1.2376

Also can be accessed through the Top Menu

HOME EDITORIAL NOTES DEAL LOG NEWS REPORTS CONT

OP

- Gulf Coast (2)
- Group 3 (2)
- Los Angeles (1)
- San Francisco (1)

TICKER
Products Pricing – 24/7

NVMEX GLOBEX LIVE TICKING - 7/19/16 16:39:34ET

- Displays deals that have been confirmed by editors
- Typically ordered from earliest to latest
- Deal Log Counter

Deal Log

New York Harbor Barge					
Product	Timing	Differential	Reference	kbbbl	Notes
RBOB Regular 15.0 RVP Other	31 Oct	1.00	Dec RBOB	60	
Group 3					
Product	Timing	Differential	Reference	kbbbl	Notes
Sub-Octane Unleaded 11.5 RVP Prompt	Prompt	-12.50	Dec RBOB	25	
	Prompt	-13.50	Dec RBOB	10	
	Prompt	-12.00	Dec RBOB	15	
ULS No2 Prompt	Prompt	-3.00	Dec No2	5	
	Prompt	-5.50	Dec No2	10	
	Prompt	-5.00	Dec No2	15	
	Prompt	-5.50	Dec No2	10	
Buckeye Complex					
Product	Timing	Differential	Reference	kbbbl	Notes
CBOB Regular 15.0 RVP Prompt	Nov C1	-2.50	Dec RBOB	10	
	Nov C1	-2.50	Dec RBOB	25	
ULS No2 Prompt	Nov C1	-20.00	Dec No2	20	
	Nov C1	-18.00	Dec No2	10	
Wolverine Pipeline					
Product	Timing	Differential	Reference	kbbbl	Notes
CBOB Regular 15.0 RVP Prompt	Nov C1	-1.50	Dec RBOB	15	
	Nov C1	-1.00	Dec RBOB	20	
West Shore/Badger Pipeline					

Confirmed Deals



OPIS Spot Ticker

Real-time U.S. Refined Products Pricing – 24/7

OPIS DEAL LOG

GULF COAST (42) MIDWEST (13)
NORTHEAST (1) WEST COAST (19)

NEWS

New York Harbor Jet Fuel Differentials
Strengthen, Prices Still Fall



TODAY'S NEWS

OPIS Daily Updates

[NYMEX Preview](#)

[NYMEX Closing Overview](#)

[OPIS West Coast Preview](#)

[NYMEX Midday Overview](#)

OPIS 24 Hour News Alerts

[New York Harbor Jet Fuel Differentials Strengthen, Prices Still Fall](#)

[US Gulf Coast Refined Products Continue to Decrease on Weaker Futures](#)

Georgia Governor Extends Fuel Tax Suspension

11/08/2023 09:28:20 AM

Georgia Gov. Brian Kemp (R) on Wednesday extended the state's suspension of taxes on gasoline and diesel until at least Nov. 29, when state lawmakers meet for a special legislative session.

The tax suspension was set to expire Saturday.

Kemp suspended the 31.2cts/gal tax on gasoline and 35cts/gal tax on diesel in September. Georgia is now one of eight U.S. states that see average prices for gasoline at less than \$3/gal. Wednesday morning's statewide average of \$2.8909/gal is the second lowest average in the country.

The special session is scheduled to see state legislators come up with a plan for redistricting Georgia congressional and state legislative districts, which were ruled illegal by a federal judge.

REPORTS

Futures

- Active Futures
- Futures Settlement
- NYMEX Closing Overview

East Coast Reports

- OPIS Midday Spots Report
- OPIS Full Day Close Spots Report
- Full Day One Page
- 5 Day Rolling Spots Report
- 30 Day Rolling Spots Report
- Swaps Settlement

West Coast Reports

- West Coast Snapshot Assessment Report
- West Coast Close
- West Coast Crude

Renewable Fuels Reports

- Ethanol Closing

Carbon Reports

- Carbon Allowance Assessment

HOME EDITORIAL NOTES DEAL LOG NEWS **REPORTS** CONTACT US



OPIS Spot Ticker

Real-time U.S. Refined Products Pricing - 24/7

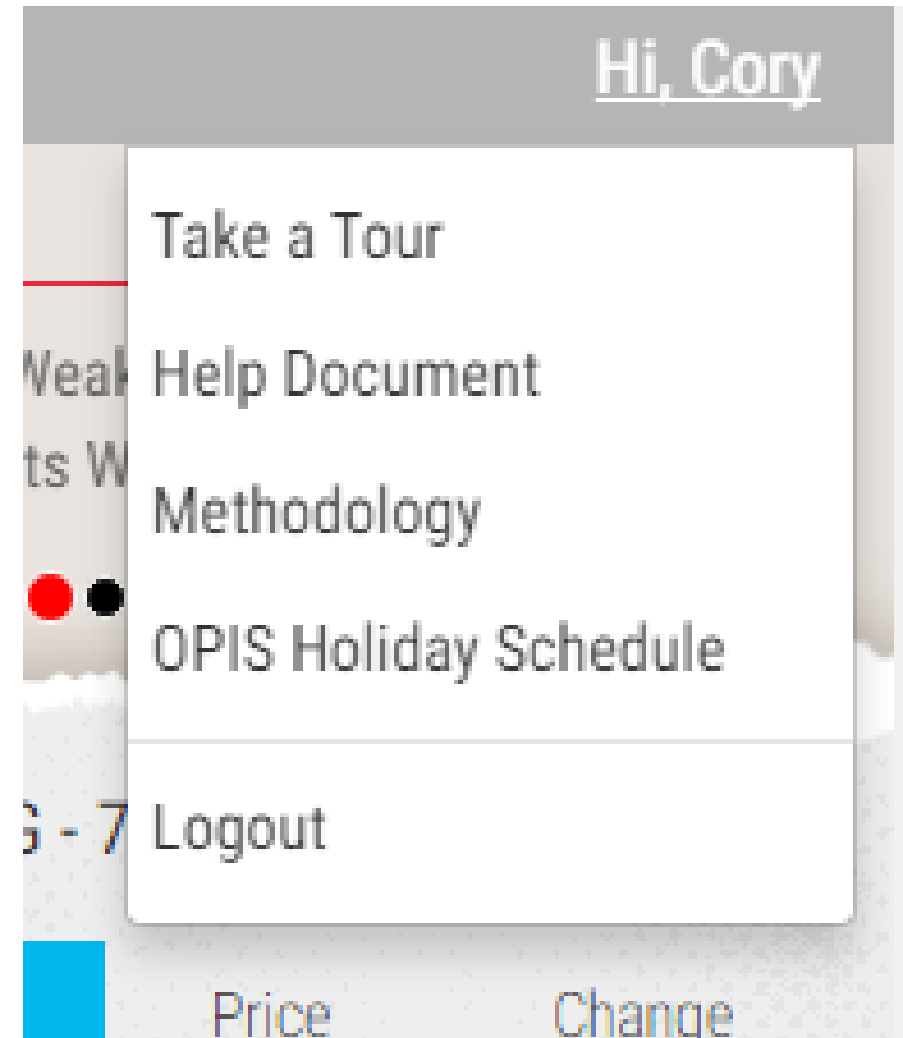
OPIS DEAL

GULF COAST
NORTHEAST

REPORTS

Upper Right Corner – User's Name:

- Tour of New Features (Great place to start for a new user)
- Help Document
- Methodology
- Holiday Schedule
- Log Out



- For gasoline products, the “change” columns calculate differently for the Overview and Detail sections

- Overview

- Compares today’s prompt price to previous session’s published mean price (“Tradable Spec”)
- Doesn’t take into consideration any other factors

- Detail

- Compares product to product, RVP to RVP

The tradable spec for Gulf Coast CBOB changed from 9.0-lb. RVP in the previous session to 11.5-lb. RVP in this day's session

Overview:

EAST CBOB						
	Cash Price	Cash Change	Basis Diff	Basis Change	Cycle Timing	Ref Month
NYHB*	1.9366	-0.0234 ↓	+0.2890	-0.0100 ↓	PMPT	OCT
GC*	1.7876	-0.0409 ↓	+0.1400	-0.0275 ↓	C52	OCT
G3*	1.6976	-0.0302 ↓	+0.0500	-0.0168 ↓	PMPT	OCT
Chi*	1.6276	-0.0834 ↓	-0.0200	-0.0700 ↓	SEP2	OCT

Same Price...

Different Changes!

Details Section:

GULF COAST						
	Cash Price	Cash Change	Basis Diff	Basis Change	Cycle Timing	Ref Month
CBOB Reg 11.5 RVP	1.7876	-0.0209 ↓	+0.1400	-0.0075 ↓	C52	OCT
CBOB Reg 13.5 RVP	1.7626	---	+0.1150	---	C52	OCT
CBOB Pre 11.5 RVP	2.0326	-0.0434 ↓	+0.3850	-0.0300 ↓	C52	OCT
Unl Reg 11.5 RVP	1.7851	-0.0384 ↓	+0.1375	-0.0250 ↓	C52	OCT
Unl Reg 13.5 RVP	1.7651	---	+0.1175	---	C52	OCT
Unl Pre 11.5 RVP	2.2776	-0.0197 ↓	+0.6300	-0.0063 ↓	C52	OCT
RBOB Reg 13.5 RVP	1.7951	-0.0234 ↓	+0.1475	-0.0100 ↓	C52	OCT
RBOB Pre 13.5 RVP	1.9701	-0.0234 ↓	+0.3225	-0.0100 ↓	C52	OCT
CPL Line 01	-0.0200	0.0000	---	---	C52	---
Ultra Low Sulfur No. 2	1.7957	-0.0329 ↓	+0.0300	-0.0125 ↓	C52	OCT

- Each spot market has different timings and cycles to keep track of material
- Transitions can be minimal or very large
- May involve a change in NYMEX contract toward the end of the month
- Check the Editorial Notes

- Usually, no NYMEX, no spot coverage
- Ticker will not tick those days
- Cash and Basis Change on next business day will be from the last published mean price
 - Example: Friday, July 4th – No Spots
 - What will the changes calculate off of for Monday July 7?
 - Monday, July 7th will show changes from July 3rd (last published levels)
- Technical Alert, Editorial Notes inform ticker users

Thank you for attending! Questions?

Cory Wilchek
301.909.5725
cwilchek@opisnet.com
ICE: cwilchek

Customer Service

energycs@opisnet.com

North America: +1 888.301.2645 (toll-free within the U.S.)

<https://www.opisnet.com/contact/contact-us/>

The information contained in this report is confidential. Any unauthorized use, disclosure, reproduction, or dissemination, in full or in part, in any media or by any means, without the prior written permission of Dow Jones Energy Limited or any of its affiliates ("Dow Jones") is strictly prohibited. Dow Jones owns all Dow Jones logos and trade names contained in this report that are subject to license. Opinions, statements, estimates, and projections in this report (including other media) are solely those of the individual author(s) at the time of writing and do not necessarily reflect the opinions of Dow Jones. Neither Dow Jones nor the author(s) has any obligation to update this report in the event that any content, opinion, statement, estimate, or projection (collectively, "information") changes or subsequently becomes inaccurate. Dow Jones makes no warranty, expressed or implied, as to the accuracy, completeness, or timeliness of any information in this report, and shall not in any way be liable to any recipient for any inaccuracies or omissions. Without limiting the foregoing, Dow Jones shall have no liability whatsoever to any recipient, whether in contract, in tort (including negligence), under warranty, under statute or otherwise, in respect of any loss or damage suffered by any recipient as a result of or in connection with any information provided, or any course of action determined, by it or any third party, whether or not based on any information provided. The inclusion of a link to an external website by Dow Jones is not an endorsement of that website or the site's owners (or their products/services). Dow Jones is not responsible for the content or output of external websites. © 2023 Oil Price Information Service, LLC. All rights reserved and all intellectual property rights are retained by Dow Jones.